

# Wildlife walks in Berkshire

Our  
favourite  
five

Wildfowl  
on the Lake



## Langley Country Park

Beautiful, tranquil and historic with a variety of habitats for wildlife and year round activities for all.

**Buckinghamshire SLO OLS**

Green flag Award



## Lilly Hill Park

A green flag awarded, public open space with diverse habitats for birds, bats, insects, wild flowers, grasslands and trees.

**Bracknell RG12 2RX**

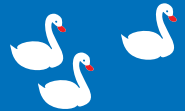
Flora & Fauna



## Englemere Pond

A lovely Nature reserve on the doorstep, all sorts of flora and fauna to be seen throughout the year and great dog walking routes too.

**Ascot SL5 8BA**



Beautiful Bluebells



## Moor Copse Nature Reserve

Peaceful, relaxing, and easy terrain leads up into beautiful Tidmarsh. A little off the beaten path but well worth a visit.

**Reading RG8 8HE**

Looking for  
Lizards



## Finchampstead Ridges

If you walk slowly and quietly on a sunny day you may be lucky enough to spot a common lizard or slow worm basking in the warmth of the sun.

**Wokingham RG45 6AE**

# Wildlife walks in Cornwall

Our  
favourite  
five



Good for  
Birdwatching



## Marazion Beach

If you're into bird spotting you'll love it here plus you'll find lots of like-minded people to chat to. Don't forget your binoculars!

**Marazion TR17 OAA**

Seal Spotting



## Godrevy



Natural beauty at its best. An easy walk, stunning views and stacks of wildlife. Share the beaches with the seals.....that's how close to nature you are.

**South West Coast Path, Hayle TR27 5ED**

Perfect Ponds



## Tehidy Country Park

For short or long walks, there's something for everyone. The squirrels are friendly and the ponds have lots of geese, ducks and swans.

**Camborne TR14 OTS**

Flora & Fauna



## The Camel Trail



Whether you walk it or cycle it, the Camel Trail is a lovely way to spend a few hours. Fantastic scenery and wildlife in abundance.

**Bodmin PL30 4QR**

Wonderful  
Waterfalls



## Golitha Falls

A beautiful setting with an easy walking path beside the gradual falls. Very calming, great for photography and wildlife watching.

**Liskeard PL14 6RU**

# Wildlife walks in Devon

Our  
favourite  
five

Views Across  
Torbay



## Berry Head Nature Reserve

Enjoy superb coastal walks, spot wildlife on land and at sea, or relax in the award-winning Guardhouse Café.

**Brixham TQ5 9AP**



Guided Tours



## The Donkey Sanctuary

Come and say hello to some of the hundreds of donkeys waiting to meet you, completely free of charge.

**Sidmouth EX10 0NU**

Beautiful Walks



## Dawlish Warren Nature Reserve

The Warren is so important that it is protected for its wildlife by both national and international law.

**Dawlish EX7 0NF**



Historic Setting



## RSPB Chapel Wood

A variety of birds nest here, Tawny Owls, Nuthatches, Great Spotted, Green Woodpeckers along with Red deer, Brown hares and Badgers.

**Braunton EX33 1JA**



Stunning  
Waterfall



## Becky Falls

Take time to explore over 50 acres of woodland and streams which are rich in wildlife.

**Dartmoor TQ13 9UG**

# Wildlife walks in Dorset

Our  
favourite  
five



**Incredible Views**



## Steamer Point Nature Reserve

The reserve is an invaluable stopping off point for migratory species such as summer birds and insects.

**Christchurch BH23 4AU**

**Ancient Woodland**



## Thorncombe Wood

A magical pocket of mixed birds, mammals, damselflies, dragonflies and even Dartmoor ponies.

**Dorchester DT2 8QH**

**Otters and Kingfishers**



## Stour Valley Nature Reserve

This riverside local nature reserve was our first to be awarded a Green Flag.

**Dorset BH9 3NZ**

**Perfect Adventure**



## Brownsea Island

Thriving natural habitats create a unique haven for wildlife, such as the rare red squirrel and a wide variety of birds

**Poole BH13 7EE**

**Wildflower Meadows**



## Durlston Country Park

The perfect place to start exploring Dorset's Jurassic coast. Acres of wildflower meadows, sea cliffs, woodland, superb coastal walking and spectacular views await you.

**Swanage BH19 2JL**



# Wildlife walks in Gloucestershire

Our  
favourite  
five

**Fantastic  
Forests**



**The Forest of Dean**

Stunning scenery, wild deer and boar, ponds, streams, rspb spots and so much more. Go see it and enjoy it for yourself!

**Coleford GL15 4JD**

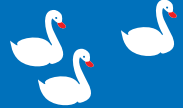
**Long Walks**



**Mallards Pike Lake**

A lovely walk in the sunshine. It's a little bit of paradise and well worth a walk. You may even get to see the baby geese if you go at the right time.

**Cinderford GL14 2UH**



**Flora & Fauna**



**The Cyril Hart Arboretum**

Labelled trees, birds and squirrels that feed close to you, and trails that take you into the forest or to cross streams. It's a joy to visit.

**Coleford GL16 7EL**

**Shallow Paddling**



**Wenchford Picnic Site**

The site is a clearing in the forest with a shallow stream running through it. Time to start looking for Stickleback fish.

**Blakeney GL15 4AW**

**Forest Walks  
& Wildlife**



**Nagshead Nature Reserve**

A gentle walk through the forest with information boards on wildlife and benches to sit and watch from. At quiet times you may even see wild boar.

**Lydney GL15 4LA**

# Wildlife walks in Hampshire

Our  
favourite  
five

Outstanding  
Natural Beauty



## New Forest National Park

With ponies roaming freely, the new forest is also a 'world capital' for wildlife with a huge diversity of rare plants and animals.

**New Forest SO43 7NY**

Birdwatching



## Fleet Pond Nature Reserve

Featuring heathland, woodland, reedbed and marsh, and home to many species of birds.

**Fleet GU14 0LZ**

Nature &  
Wildlife Areas



## Bolderwood Deer Sanctuary

Viewing platform for deer, picturesque forest and national park for the family.

**New Forest SO43 7GQ**

Wonderful  
Wildlife



## Anton Lakes Nature Reserve

Great walks and plenty of wildlife to seek out. If you are a photographer then this is the place to get that expert shot of brilliant wildlife.

**Andover SP10 3SY**

Plenty to see  
and do



## Wildgrounds Nature Reserve

This green oasis in the heart of Gosport offers a sanctuary of peace and quiet.

**Gosport PO13 8AB**

# Wildlife walks in Oxfordshire

Our  
favourite  
five

Remote  
Tranquillity



## Warburg Nature Reserve

Home to an incredible range of habitats sheltering thousands of species, each season there's something interesting to experience.

**Henley-on-Thames RG9 6BL**

Red Kites



## Little Wittenham Nature Reserve

With wide open spaces, Little Wittenham Nature reserve is alive with wildlife. It's the perfect place for a relaxing stroll or a peaceful picnic.

**Oxfordshire OX14 4QZ**

Stunningly  
Beautiful Walk



## Wychwood Wild Garden

It is a real haven for nature, plants and trees, lots of sweet ducks, moor hens, coots and so much more.

**Shipton-under-Wychwood OX7 6DG**

Outstanding  
Views

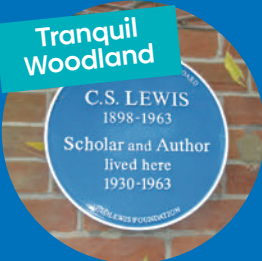


## Watlington Hill

Chalk downland and ideal habitat for many wild flowers, butterflies, birds etc. Views are extensive and this is a lovely picnic place.

**Watlington OX49 5HS**

Tranquil  
Woodland



## CS Lewis Nature Reserve

A tranquil woodland, CS Lewis Nature Reserve contains a large pond full of aquatic plants and toads that migrate to spawn here.

**Oxford OX3 8JD**

# Wildlife walks in Somerset

Our  
favourite  
five

Wonderful  
Wildlife



## The Avalon Marshes

At the heart of the Somerset Levels and Moors, lies a beautiful, internationally renowned area called the Avalon Marshes.

**Somerset BA6 9TT**

Breathtaking  
Views



## Draycott Sleights

Draycott Sleights has a rich variety of wildlife and spectacular panoramic views across Somerset.

**Cheddar BS27 3SQ**

Insect Spotting



## Huish Moor

Located one mile south west of the village of Huish Champflower. The mix of habitats supports many rare and protected species.

**North Devon EX39 4LR**

Flona and  
Forna



## Withial Combe

A remote, steep-sided ancient wooded ravine together with two small meadows great for woodland flowers and birds.

**Shepton Mallet BA4 6UF**

Badgers and  
Roe Deer



## Aller & Beer Woods

Cool refuge from the summer sun and outstanding views across the Somerset Levels.

**Somerset TA10 0QU**



# Wildlife walks in Surrey

Our  
favourite  
five

Good for  
Birdwatching



## Epsom Common

Recognised nationally as important for wildlife; The common covers 176 hectares and has a range of habitats including woodland, grassland and scrub to walk in.

**Rushett Lane, Epsom, Surrey, KT18 7TR**

Swan Spotting



## Earlswood Common

For family fun times, try walking around the lake searching for 23 bespoke hidden bird boxes. The swans will get very close to you here.

**Reigate RH2 7QH**

Rural Surrey



## Walsham Lock and Weir

For short or long walks in rural Surrey. If you want peace, tranquility, geese, ducks and swans this is the place for you.

**Woking GU23**

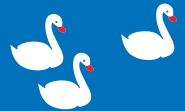
Abundant Wildlife



## Staines Moor

There's plenty of wildlife around. Birds of prey (kites, owls) squirrels, rabbits, pheasants, roe deer, foxes, and various types of small birds.

**Stanwell, Staines TW19 6EG**



Get Into  
Nature



## Limpsfield Common

If you go down to the woods today... you might just stumble across a charming little village dedicated to hedgehogs, rabbits and foxes.

**Moorhouse Rd, Oxted RH8 OTW**

# Wildlife walks in Sussex

Our  
favourite  
five

Good for  
Birdwatching



## Rye Harbour Nature Reserve

A coastal nature reserve with 5 birdwatching hides and miles of footpaths to explore. Habitats include saltmarsh, shingle, saline lagoons, grazing marsh and reedbed.

**Rye TN31 7TU**

Seabirds



## Hastings Country Park

If you are lucky to go on the correct trail you'll end up seeing the most stunning views from the cliff looking down at a beautiful beach & Seabirds!

**Hastings TN35 5DR**

Birdwatching



## Old Lodge Nature Reserve

Set in the middle of the much larger Ashdown Forest. Keep an eye on the ponds and wet areas throughout the summer to spot beautiful birds, dragonflies and damselflies.

**Uckfield TN22 3JD**

Osprey Trails



## Arlington Reservoir

Sitting below the South Downs, the reservoir is a prized location for bird watchers and visitors who flock to follow the Osprey Trail.

**Polegate BN26 6TF**



Great for  
Butterflies



## Malling Down Nature Reserve

Superb chalk grassland and scrub with many typical and rare flowers and butterflies, all within easy walking distance of Lewes town centre.

**Lewes BN8 5RH**

# Wildlife walks in Wiltshire

Our  
favourite  
five

Water & Woodlands



## Coate Water Country Park

The lakes provide an important habitat for dragonflies along with a wide range of fish such as carp, bream and pike.

**Swindon, SN3 6AA**

Great Walks



## Shaw Forest Park

A former landfill site, slowly reforested over a number of years. It now boasts an array of habitats ranging from ash and willow woodlands to scrubland.

**Swindon SN5 5PQ**

Easy Walks



## Drews Pond Nature Reserve

Drews pond is a small community broadleaved coppiced managed woodland. With plenty of paths and good bird and butterfly habitats.

**Devizes SN10 5JZ**

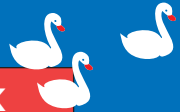
Green Spaces



## Southwick Country Park

A green space of established trees and meadows and loved by dog walkers, runners and people with energetic children!

**Southwick, Trowbridge BA14 9AF**



Rare Species



## Clanger Wood

A paradise for nature lovers with one of the best displays of native bluebells in the county and an abundance of rare butterflies and moths.

**Westbury BA13 4LL**